

Strategic Plan 2023-27

Vision

Our vision is for our people and communities to live well.

Purpose

To improve the health and wellbeing of the people of East Gippsland by providing health care and support.



Our Values

Compassionate

- We are caring and kind to people and the planet
- We work respectfully and with integrity
- We build trust through listening and understanding.

Inclusive

- We exist to support the health and wellbeing for everyone in our community
- We celebrate and value diversity
- We are ethical, honest, reliable and fair.

Courageous

- We are creative and resourceful
- We are progressive and collaborative
- We are not afraid to try new things for the benefit of our community.

Our Priorities

1. Enhanced Access and Experience

We respond to current and emerging needs by delivering innovative services, information and assistance to individuals and communities.

2. Engaged and Supported Workforce

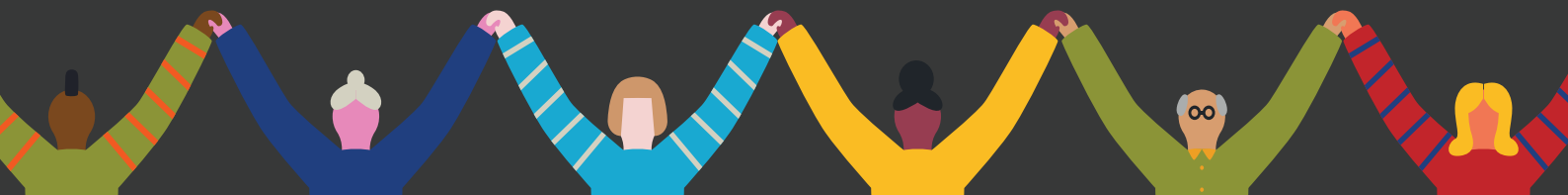
Our workforce is engaged and supported to respond to community need and deliver positive client outcomes.

3. Partnership and Influence

We adopt a partnership model to respond to the health and wellbeing needs of the community.

4. Sustainability

We adopt and promote contemporary systems, infrastructure, tools and resources that enable us to thrive.



03 5155 8300



hello@glch.org.au



Gunaikurnai Country, PO Box 429, Lakes Entrance VIC 3909

